

22

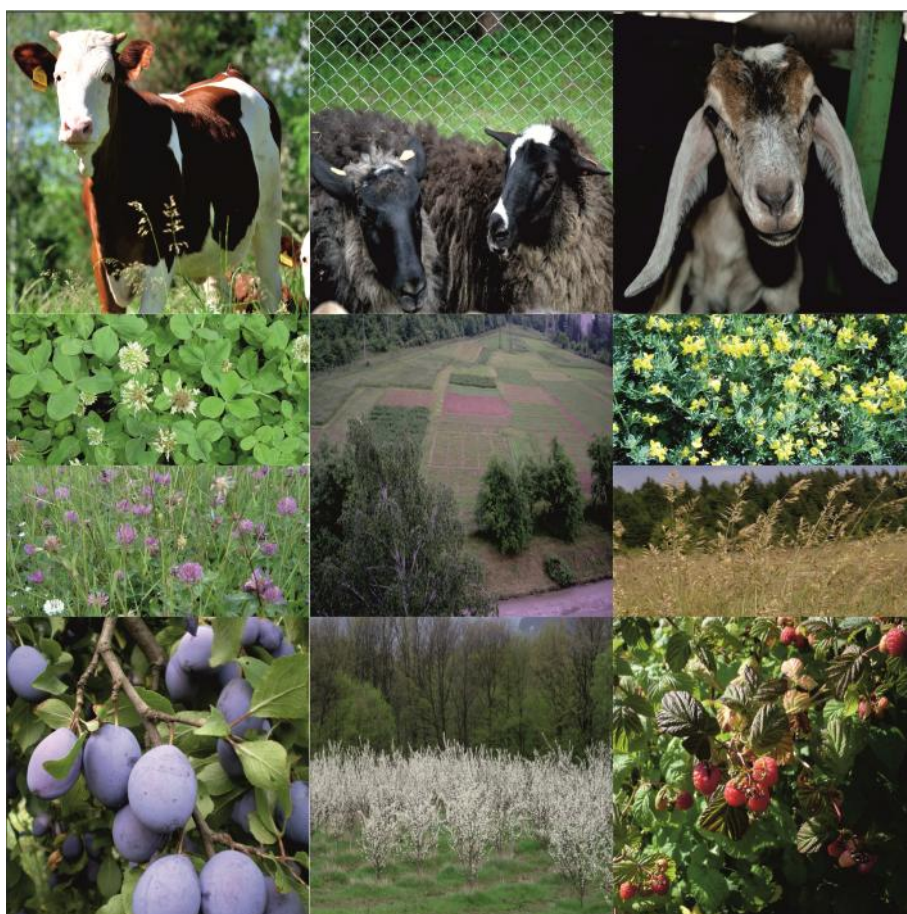
” -2019“

”

:

”

”



- , 16.05. - 17.05.2019 .

8.00-10.00 .
10.00 .

: . -
: . -

10.30-11.00 . **Jan Ned Iník**

The current challenges of agriculture

11.00-11.30 . **Aleksandar Leposavi , Darko Jevremovi**

Production of highbush blueberries in the world and Serbia

11.30-12.00 . , **Klaus Hoff**

12.00-12.30 .

12.30-14.00 .

“ ”

1

: . -
: . -

14.00-14.15

14.15-14.30 .

PGF 2

14.30-14.45 .

14.45-15.00 .

15.00-17.00 .

“ ” - 1 (14).

1. - ,

2. **Leonita Salihu, Lorika Salihu, Valdet Gjinovci, Dilaver Salihu**

Amendments intended in the industry as the result of the development of micro-organizations inadmissible

3. **Vasil Pirgozliev, Stephen Paul Rose, Sara Llamas-Moya**

A combination of exogenous enzymes increases dietary nutrients utilisation for broilers

4.

5.

6.

7.

8.

9.

10.

11.

12.

13.

14.

“ _____ ”

3

: : : -
: . . -

14.00-14.15

14.15-14.30 .

14.45 - 15.15 .

15.15-15.35 .

15.35 - 18.00 .

“ - 1 (24). ”

1. Daniela Knotová, Jan Pelikán

Productivity of Bulgarian alfalfa varieties in the conditions of the Czech Republic

2. Jaroslav Lang

Production of high-quality forage in dry conditions. What are our options?

3. , (Pisum sativum L.)
4. , (Vicia sativa L.) " "
5. (Festuca rubra L.)
6. (Lolium perenne L.)
7. , , , ,
- 8.
9. Apion seniculus Kirby
(Coleoptera: Curculionidae)
10. , , (Vicia
pannonica Grantz)
11. , (Vicia sativa L.)
12. - , Agropyron desertorum (Fisch.) Schultes
13. - , Sorghum vulgare var. technicum [Körn.]
14. , - (Lotus corniculatus
L.)
15. , - (Sorghum sudanense (piper.) Stapf)
- 16.
17. , , , in vitro
18. , ,
19. ,
20. , , ,
21. , , ,
22. , , 1
- 23.
- 24.

14.00-14.15 .

14.15-14.30 .

14.30-15.00 .

15.00-15.20 .

15.20-17.30 .

“ ” - 1 (14)

1.

2.

3.

4.

5. **Aleksandar Leposavi , Darko Jevremovi , Olga Mitrovi , Branko Popovi , Jelena Tomi , Tanja Vasi**

Impact of applied nutrients on yield and quality of raspberry cultivars grown at different localities of the Republic of Serbia

6. **Tatjana Marjanovi , Tatjana Vujovi , Milena or evi , Dragana Vrani**

Micropropagation of cherry rootstock Gisela 5

7. **Žaklina Karaklaji -Staji , Jelena Tomi , Marijana Pešakovi , Svetlana M. Paunovi , Boris Rilak, Mira Milinkovi**

Influence of an intensive growing technology on antioxidant capacity and phenolic composition of blackberry a anska Bestrna

8.

9.

10.

“E ”,

11.

12.

5“

13.

- , ,

« »

Lebosol-K

14.

, „Lebosol – 450”

“ ”

2

: : -
: . . -

14.00-14.15

, ,

14.15-14.30 .

, , ,

14.30-14.45 .

o , , ,

14.45-15.00 .

, ,

15.00-15.15 .

-

e

15.15-16.00 .

16.00-16.20 .

16.20-17.00 .

“ ” - 1 (10).

1.

, ,

2.

,

Fabiana imbricata Ruiz. et Pav.

3.

,

4.

,

5.

,

6.

7.

- ,

8.

, , “ ” ,

Globodera pallida

Serratia plymuthica

9. Olesia Siabruk

The impact of the weather conditions on the dynamics of CO₂ emissions from the soil in seasonal and long-term dynamics

10. Kemajl Kurteshi, Kimete Lluga, Leanne Websdale, Flamur Kurtesh

Investigation of algocenosis in waters of lake Stublina (Gjilan, Kosovo) during summer season of 2016 year

19.00 .

17.05.2019 . ()

“ ”

3

: . . -

9.00-9.15 .

9.15-9.30 .

9.30-10.00 .

10.00-11.30 .

“ ” - 25 (47).

25.

26.

27.

(*Medicago sativa* L.)

28. , e ,

(*Medicago sativa* L.) 4

29. , , (*Brassica napus*)

30. , 424

31. , ,

32. ,

33. , (*Medicago sativa* L.) ,
(*Plagionotus floralis* Pall.)

34. (Plagionotus floralis Pall.) (Medicago sativa L.)

35. ' , Total Care ,

36. ,

RM619

37.

RL61/31

38. ,

1/2017 – e

39.

F₁

307 435

40. ,

-307 -435

41. ,

42.

561 . .

43.

()

44. Tanja Vasi , Snežana Andjelkovi , Snežana Babi , Jordan Markovi , Sanja Živkovi , Dragan Terzi
Mycopopulations on birdsfoot trefoil (*Lotus corniculatus* L.) in Serbia

45. Snežana Andjelkovi , Snežana Babi , Tanja Vasi , Jasmina Milenkovi , Jordan Markovi , Mladen
Prijovi , Mirjana Petrovi

Biogenicity of the soil natural grasslands in Western and South-Western Serbia

46. Jordan Markovi , Tanja Vasi , Jasmina Milenkovi , Dragan Terzi , Snežana An elkovi , Dragoslav
oki , Mladen Prijovi , or e Lazarevi

Testing alfalfa for phosphorus, potassium, sulfur and boron nutrient deficiencies

47. Jasmina Milenkovi , Rade Stanisavljevi , Jordan Markovi , Tanja Vasi , Mirjana Petrovi , Snežana
Andjelkovi , Dragoslav Djoki

Variability of some agronomic characteristics of faba bean (*Vicia faba* L.) genotypes in Serbia

“ ”

4

: . -
: .

9.00-9.15 . , , ,
(*Cornus mas* L.)

9.15-9.30 . , ,

GF 677

9.30- 9.45 .

9.45-10.05 .

10.05-11.00 . “ – 15 (33)

”

-
- k:**
15. , , -
16. , , -
17. , , -
18. - , , -
19. - , , -
20. **Darko Jevremovi , Svetlana A. Paunovi**
 Sharka (*Plum pox virus*) in Serbia – previous research and future prospects for its control
21. , , a (*Pyrus communis* L)
22. , , :
23. , , ,
24. , , *Phytophthora*
25. , , , *Phytophthora*
26. , , , *Phytophthora*
27. , , *Phytophthora gonapodyides*
28. **Boris Rilak, Ivan Gliši , Milan Luki , Marijana Pešakovi , Svetlana M. Paunovi , Aleksandra Kori anac**
 Effect of CaCl₂ application on yield and quality of economically important apple cultivars
29. , ,
30. , (*Hippophae rhamnoides* L.)
31. ,
32. ,
- 33.
- 12.00 .